

mindray

DP-10Vet

Digital Ultrasonic Diagnostic Imaging System



DP-10Vet

Digital Ultrasonic Diagnostic Imaging System

Ergonomic Design with Trendy Look

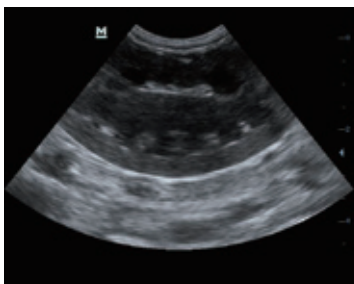
- 12.1 inch high definition LED with Full Screen design
- 30 degree tilting angle adjustable monitor for better viewing
- User friendly control panel with backlit for working in clinics
- Light and compact design offering extreme portability

Good Image Quality for Wide Veterinary Use

- PW Doppler and Auto Trace reveal details of blood flow for more comprehensive diagnosis
- Tissue Harmonic Imaging for enhanced contrast resolution
- iZoom for instant full screen image expansion
- Abroad range of transducers covering abdomen, thoracic, cardiac, tendinous, small parts, urology and reproductive system for animals such as dog, cat, equine, bovine and ovine, etc.

Saving the Scanning Time by Facilitating the Workflow

- iStorage for instant images and reports transfer to PC
- User-defined keys for programmable personalized operations
- 1.5h uninterrupted scanning with rechargeable battery
- 500GB hard disk for large patient data storage



Feline kidney



Canine bladder

www.mindray.com

P/N:ENG-DP-10Vet-210285x2P-20180620

©2018 Shenzhen Mindray Bio-Medical Electronics Co.,Ltd. All rights reserved.

mindray
healthcare within reach