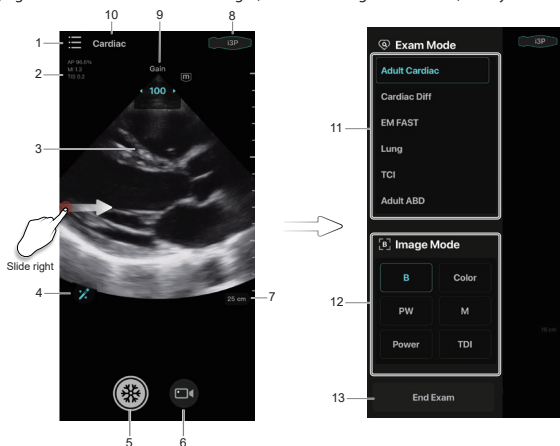


# Quick Reference Guide

## Screen Display

The imaging screen contains ultrasound images, exam and image information, and system controls.



1. System Tools Button  
Selects Patient Information and Review, iStation, Setup, etc.  
Reviews the stored images and cines in the "Patient Info.&Review" menu.
2. Image Parameters  
Displays the parameter values of the current image.
3. Imaging Area
4. iTouch
5. Freeze Button
6. Cine Button
7. Depth Scale  
Slides up or down in the imaging area to adjust the imaging depth. The real-time depth value is displayed above the imaging area.
8. Probe Settings  
Taps to enter Probe Settings, which displays battery level and configuration of the probe.
9. Gain  
Slides left or right in the imaging area to adjust the imaging gain. The real-time gain value is displayed above the imaging area.
10. Exam Mode  
Displays the current exam mode.
11. Exam Mode Area
12. Imaging Mode Area
13. End Exam Button

## Installing Application

The iOS device can download the TE Air application from the App Store. Before installing the application, make sure that your iOS device meets the minimum configuration requirements.

## Signing up an Account

To create a new account, perform the following procedures:

1. Tap the TE Air application icon.
2. Specify the user name and password at the Sign Up page.  
The user name and password length should be between 8 and 16 characters and include at least one letter. The password can only be letters and numbers.
3. Select **[Sign up]** to create a new account and login onto the system.

## Logging onto the System

1. Select the login type (Local or LDAP).
2. Enter the user name and password, and tap **[Login]**.

## Connecting a Probe for the First Time

1. After login in, the "Connect probe" window pops up, and tap **[Connect]**.
2. Long press the power key of the wireless probe until the indicator of the wireless probe starts flashing. Tap **[Next]**.
3. Tap **[Next]** when the indicator of the wireless probe blinks.
4. Connect the probe by the following 2 methods, and select **[Join]** in the system prompt.
  - Tap **[Scan]** to scan the QR code on the wireless probe.
  - Tap **[Manually Enter SN Code]** to enter the SN code, and tap **[Connect]**.After successful connection, the indicator of the wireless probe is on.

## Connecting a Probe After the First Time

1. After login in, the "Connect the latest probe" window pops up.
2. Follow either of the methods below.
  - Tap **[Connect]**, and then tap **[Join]** in the prompt box.
  - Tap **[Connect to another probe]** > **[Add new probe]**, or connect an existing probe in the list.After successful connection, the indicator of the wireless probe is on.

## Scanning

1. Select an exam mode and imaging mode.
2. Adjust the image depth and gain.
3. Save images or cines.
4. Perform measurement.

## Logging out the System

1. Tap System tools button .
2. Tap **[Log out]**.

## Note:

For detailed information, please refer to the operator's manual.